

Portable Linear Scanner, designed for shallow organs, Mammary gland, Thyroid, and Breast Imaging

FFsonic

UF-4000L6

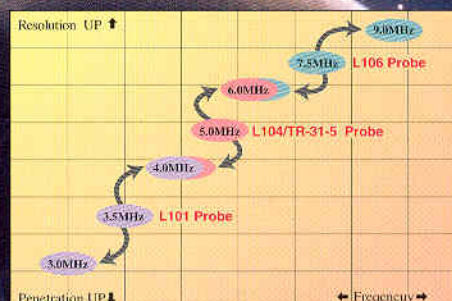
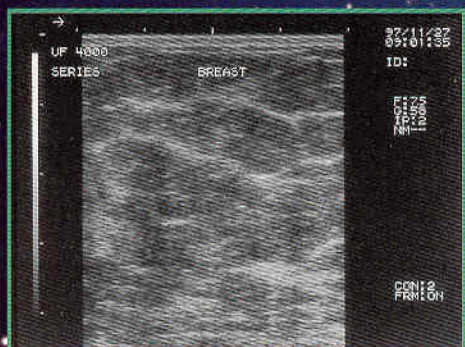
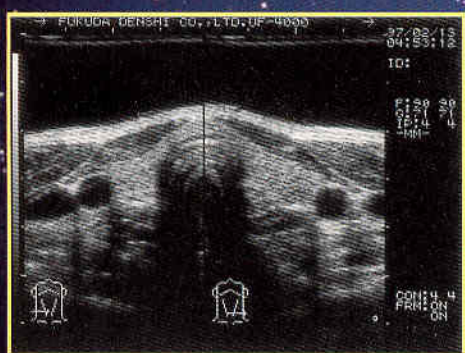
Diagnostic Ultrasound Imaging Equipment

Features

- Multi-Frequency Function enables selection of Tri-Frequencies with each Transducer. Maximum 9MHz imaging can be obtained.
- High-End Image Control Function as Zoom, Image Processing, and Various Focal Zones.
- Built-in Large Track Ball allows ease of use.
- B, B/B, M, and B/M Mode Display
- Compact design allows use at the Bedside.
- 7.5MHz Probe has Puncture Guide Line on the display, and optional Acoustic Coupler can be attached.

Applications

- Thyroid ● Mammary gland ● Musculoskeletal
- Sports Medicine ● Small Parts
- Vascular Imaging (Non-Doppler) ● Urology



Specifications

| | | |
|-------------------------------|---|--|
| Scanning | FUT-L106A, Electronic Linear probe (Tri-Frequency 6.0/7.5/9.0MHz 38mm) | |
| Display mode | B (1 or 2 displays), B/M, M | |
| B-mode | Focus method | Transmitting 4 types focus |
| | Display Magnification | 5 steps, variable |
| | Display Control | Up/Down reverse Right/Left reverse Image Shift, Image Zoom |
| M-mode | Display mode | Scroll |
| | Sweep speed | 3 steps, selectable |
| Image Control | GAIN | Continuously variable |
| | STC | Near & Far |
| | Contrast | 7 steps, selectable |
| | IP | 7 steps, variable |
| Gray Scale | 256 levels | |
| Monitor | 7-inch, High-resolution | |
| Measurements and Calculations | General | Distance, Area, Circumference, Volume |
| | OB/GYN | Gestational week, Expected delivery Date, Fetal weight |
| | M-mode | Velocity, Heart rate |
| Automatic display | Year/Date/Time Probe frequency, focus information, Grey scale, Gain value, IP No. Contrast No., Frame Correlation Right/left inversion marks | |
| Power requirements | 115/230VAC, 50/60Hz | |
| External Dimensions | 33.2(W) x 31.2(D) x 26.0(H)cm | |
| Weight | Approx. 10Kg | |

Optional Probes

| | | |
|------------|--------|---------------------------|
| FUT-L104 | 5.0MHz | 60mm linear** |
| FUT-L101 | 3.5MHz | 96mm linear** |
| FUT-TR31-5 | 5.0MHz | 60mm Transrectal linear** |

※Probes require optional Connection Kit1

Associated accessories and equipment

Connection Kit1: UF-4000-CK1, Acoustic coupler: FUT-ECW11-38 (for FUT-L106,-L106A)

Printer: FVP-800, Trolley: OT-104,

FUKUDA DENSHI reserves the right to change specifications without notice.



FUKUDA DENSHI CO., LTD.

39-4, Hongo 3-chome, Bunkyo-ku, Tokyo 113-8483, Japan

Tel:+81-3-5684-1455 Fax:+81-3-3814-1222

Distributed by: